

EVENING DRESS OF THE EARLY JAZZ AGE



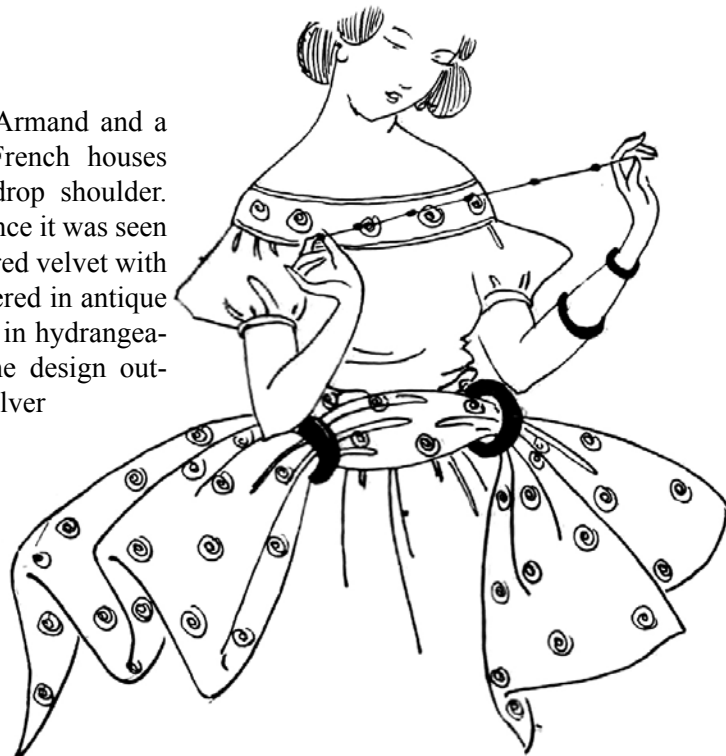
When a single feather makes a fan mounted on a stick of carved ivory

The Delineator, March 1920



A faint echo of Victorian stays and ways is seen in the bodice and bouffant skirt of a dancing-dress with its drooping shoulders and quaint corsage bouquet. Chez Lanvin

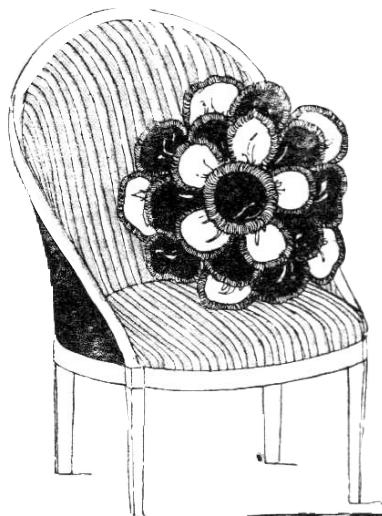
Lanvin, Martial et Armand and a number of other French houses use the Victorian drop shoulder. In one notable instance it was seen in a frock of peach-red velvet with the bodice embroidered in antique gold and in another in hydrangea-blue taffeta with the design outlined in silver



The Delineator, November 1920



Paris offers a new fancy in a muff of chiffon caught together through the center with a garland of roses. Chez Madeline.



The sunflower cushion of lemon-yellow and black satin, outlined with orange wool, is only an excuse to lure you to look at these white kid slippers with strap fastening under tongue of steel-beaded black suede, black velvet-frilled pumps with diamond bands, and afternoon shoe of black patent leather.



The Delineator, September 1920

The Designer, October 1920